

# QUIETWALK<sup>®</sup> MAX

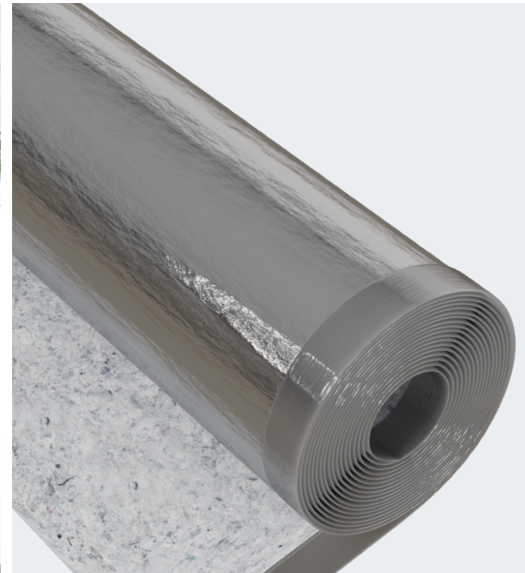
PREMIUM UNDERLAYMENT & WATER DEFENSIVE BARRIER

## Designed for use with:

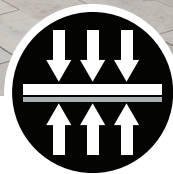
- Vinyl Plank
- Laminate
- Hardwoods & Bamboo
- Duravana<sup>®</sup> Hybrid Resilient

\* Provides enhanced performance for attached pad flooring

-  CLICK/FLOAT
-  NAIL DOWN
-  GLUE DOWN



Water Protection



Resists Compression From Daily Traffic



Sound Reduction



Insulating Value



Made From Recycled Materials



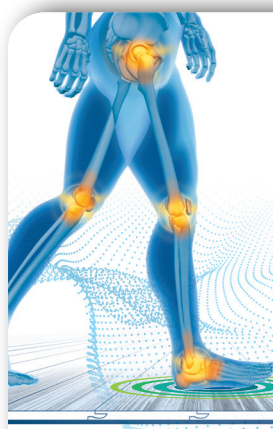
Antimicrobial Treated Fibers



Recommended For Pad Attached Flooring

## The secret's in the **SILVER!**

QuietWalk Max features a unique attached metalized vapor barrier that provides thermal reflectivity. This increases your overall home energy efficiency and helps keep it comfortable throughout the year!



- **PROVEN** To Increase Comfort By Reducing Force To Your Joints\*
- Minimizes Impact Energy & Sound Transmission
- Supports Your Floor, Especially With Pad Attached Planks

\*2022 university study

### Customer Reviews

★★★★★

#### Saved my bamboo floor

"Had minor flood damage for an unknown amount of time. This underlayment took all the damage and protected the flooring from mold. I was able to reuse the existing flooring over NEW underlayment! Good stuff!"

★★★★★

#### Great product

"Great product, durable, and easy to install. The floors are very quiet with this underlay, and it does help make the flooring feel "warmer."



Scan to view installation videos, warranty and tips!



RATED RESIDENTIAL AND COMMERCIAL

PROUDLY  
Made in the U.S.A.

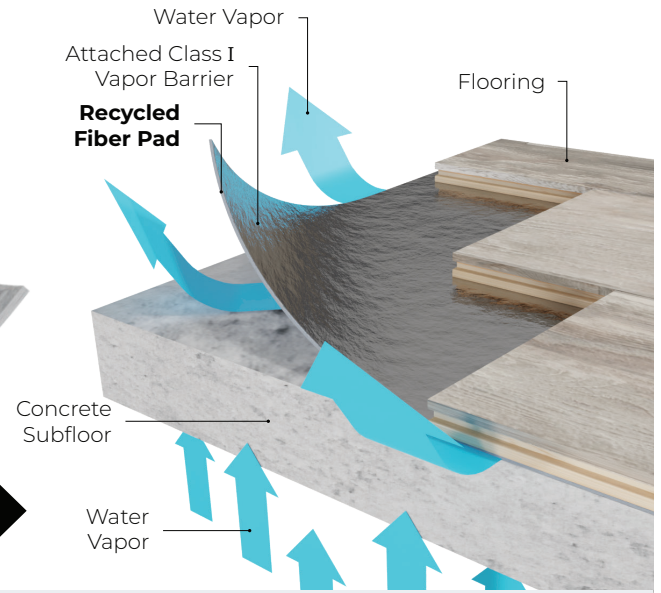
## The secret's in the SILVER!

QuietWalk MAX's unique silver film not only provides thermal reflectivity to help keep your home comfortable; it also acts as an unmatched defensive barrier that protects your investment from damaging moisture and high PH levels which may occur in concrete subfloors.



Antimicrobial treated fibers inhibit mold and mildew growth

Combined with its thick, dense, antimicrobial fiber pad, QuietWalk MAX's unique vapor barrier becomes part of a powerful water management system that aggressively wicks bulk moisture and allows it to dissipate over time while blocking high subfloor PH levels to protect the floor above.



## SUPERIOR SOUND ABSORPTION

QuietWalk MAX's dense, patented fiber construction absorbs and controls both impact and ambient sound to create a comfortable living space for everyone!

ILC Δ Delta: 26



(STC) **67**  
8" concrete with ceiling assembly  
**AMBIENT SOUND**  
The higher the STC number, the better the noise control!



(IIC) **73**  
8" concrete with ceiling assembly  
**IMPACT SOUND**  
The higher the IIC number, the better the noise control!



## SMOOTHS MINOR SUB-FLOOR IMPERFECTIONS

Firm and supportive but flexible enough to form around subfloor surface roughness which helps to cut down on extra subfloor surface prepping time. Provides extra support for planks even with pad attached.



## SUITABLE FOR USE WITH IN-FLOOR HEATING SYSTEMS



## RECYCLED FIBERS

QuietWalk Max is constructed of recycled synthetic fibers.

## LEED<sup>™</sup> CREDITS

MR 4.1 10% recycled content, MR 4.2 20% recycled content, MR 5.1 10% content manufactured within 500 miles of project, MR 5.2 20% content manufactured within 500 miles of project, MR 6 Rapidly renewable resource EQ 4.3 low emitting VOC's, may contribute to MRc4.1-4.2 and EQc4.3 (Low-Emitting Materials)



GREENGUARD GOLD certified for low emissions, conforming to Indoor Air Quality standards and Collaborative for High Performance Schools (CHPS) - CA Section 01350.



## ADDS INSULATION VALUE

Helps home insulation and provides additional comfort during seasonal changes by adding an **R-Value of 0.61** to a floor system!



## SUPPORT FOR PAD ATTACHED FLOORING

Dense, uncrushable, construction provides continuous support to the seam and click together mechanism where pre-attached pads can't reach, preventing damage and giving your floors the support they need to handle everyday life!



## TECHNICAL DATA

- **Materials:** Blended recycled synthetic fibers, polyethylene film and inert hot-melt adhesive
- **Lip & Tape Included:** Yes
- **Antimicrobial Protection:** Yes
- **Weight:** 10 lbs/100 ft<sup>2</sup> roll · 38 lbs/360 ft<sup>2</sup> roll
- **Thickness:** 1.9 mm
- **Density:** 16.04 lbs/ft<sup>3</sup>
- **Compression Set:** 8.8%
- **Compression Resistance:** 278.9 psi
- **R-Value (@ 1.4mm):** 0.61hr-ft<sup>2</sup>-degF/Btu
- **WVTR:** 0.1 lbs/1000 ft<sup>2</sup> /24 hrs
- **Perm Rating:** 0.06
- **Subfloor Moisture Emissions Allowance:** NO LIMIT
- **Approved Subfloors:** All properly prepared concrete and wood materials
- **Flammability:** Meets or exceeds Federal Flammability Standards: 1-70 (Pill Test)
- **Warranty:** Transferable LTD Lifetime



Scan to view installation videos, warranty and tips!



Scan for current pallet & truck configurations, or visit [www.mpglobalproducts.com/packout-information/](http://www.mpglobalproducts.com/packout-information/)

**RATED RESIDENTIAL AND COMMERCIAL**