

IN HOME PROJECT ASSESSMENT



LL Flooring®

A successful flooring installation starts with a complete in home project assessment. Your project assessment by a professional independent contractor will cover the following key elements to ensure your new floor stays looking beautiful for years to come.

Temperature and Relative Humidity

It's important to maintain the temperature and humidity levels in your home per installation guidelines before, during, and after installation to ensure the flooring performs appropriately.



Acclimation

Proper acclimation, which amounts to conditioning of your flooring product inside your home per installation guidelines, is critical to long-term performance of your floor. The amount of time it takes to fully acclimate varies depending on the type of floor and the climate of your home.



Furniture Moving†

Your furniture will be moved often during the installation of your floor. Using professional service, saves you time and energy, while ensuring that your floor, walls, and furniture are protected during the process.

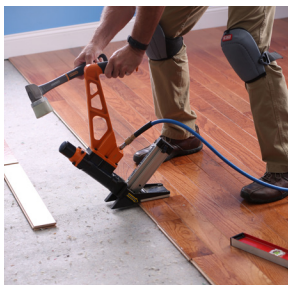


Existing Flooring Removal/Haul Away†

If your old flooring needs to be removed, that can be taken care of too. Carpet, for example, is a dirty job. Carpet and padding are removed, along with the tack strip, glue, or staples. The subfloor is then cleaned and repaired as needed. The old flooring can be hauled away and disposed of at a legal dumping facility.

Installation

Your Professional Independent Contractor will determine the best method of installation for your floor. The installation will follow industry standards and manufacturer installation guidelines



Subfloor Prep*

Appropriate subfloor prep is the foundation of a successful installation.

Clean-Dust and contaminants that can interfere with the installation system need to be removed.

Flat-Addressing flatness issues may result in an additional expense. The extent of this work cannot be determined until the existing floor covering is removed.

Dry-The long term performance of your floor depends on ensuring moisture from your subfloor does not adversely affect your flooring. Flooring has to be installed on a dry substrate. Moisture mitigation products are often required (e.g. 6mm poly or moisture tolerant adhesives).

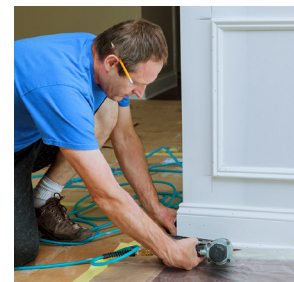
Underlayment†

Choose a suitable underlayment for your flooring. Underlayment may provide additional comfort and thermal and acoustic properties. Ask an associate for details.



Molding Installation†

No project is complete without molding, like quarter round and/or baseboards. Our Professional Independent Contractors, install these finishing touches to enhance the beauty of your new floor, offering an elegant, professional finished look to compliment your design goals.



How Will it Look?

Always be present during your installation, at the start, during, and for your final walk through, to ensure you are happy with the appearance of your flooring.

Care and Maintenance

Regular cleaning of your floor is recommended. Use the Bellwood Floor Care System, clean spills promptly, use felt pads on furniture legs, and replace them as they wear.



For more details on your products Warranty, Installation, and care visit: www.llflooring.com/warranty-installation-care

* We strive to give the most accurate assessment at the time of sale, though it is not uncommon for additional work to be discovered once existing flooring is removed and the subfloor can be inspected. Change orders exist for this reason and any additional changes will be communicated to you promptly. † Additional services, including delivery options are available.