

Dimension: 3.0" w x 0.75" h
Scotia: 0.49" w x 1" h

FSNO5

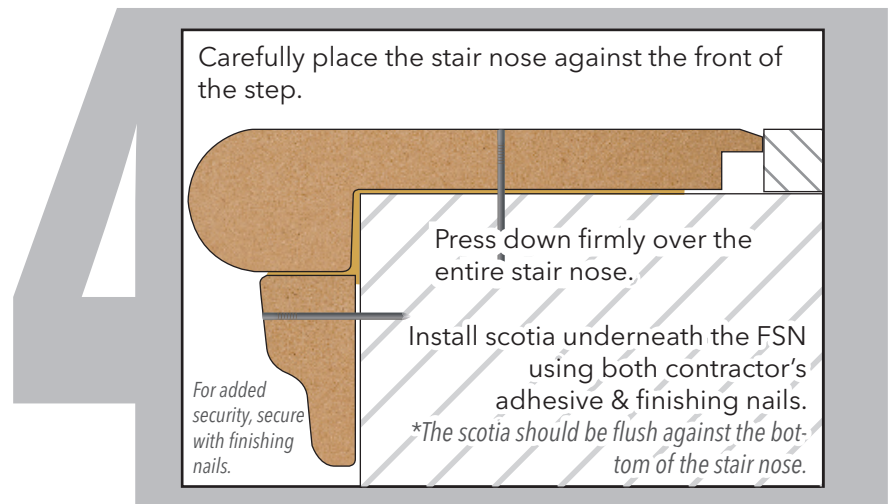
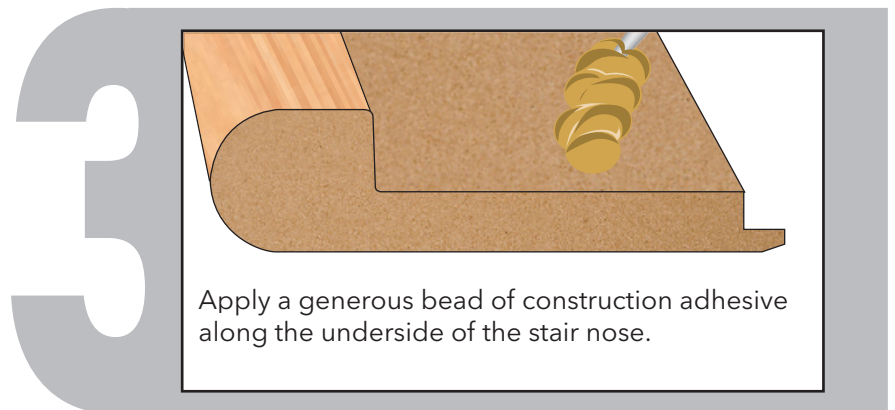
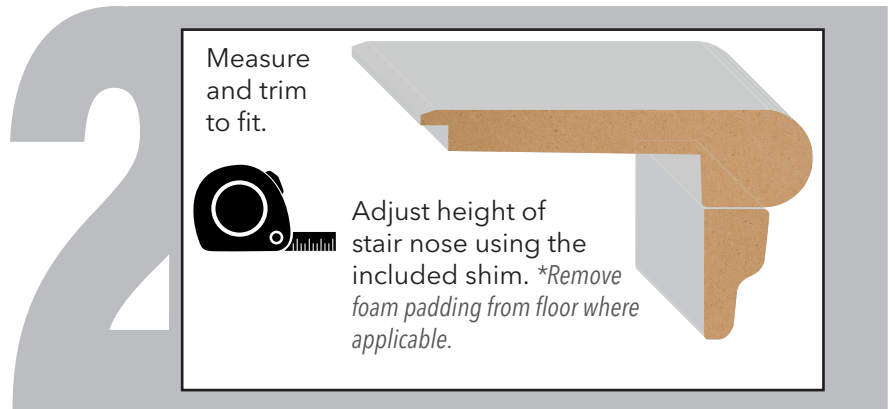
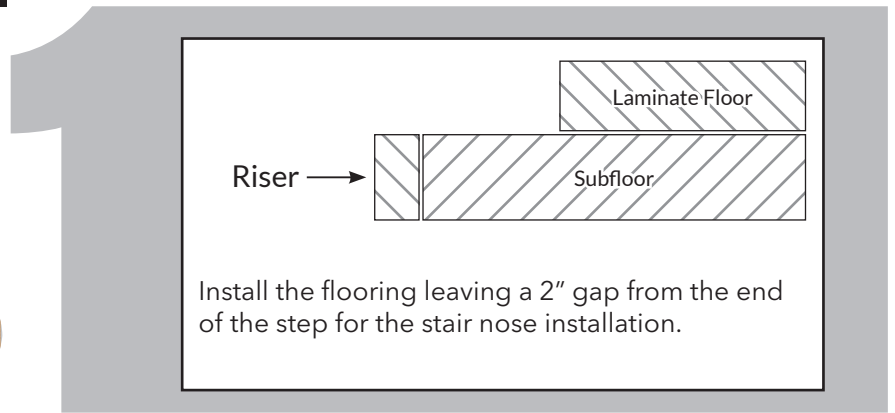
LAMINATE STAIR NOSE

Finishes the end of a step.

Used with floors 8-12mm in height.

Note: Always ensure that existing stair (Tread depth and Riser height) dimensions are maintained

Surface: Wear resistant laminate
Core Material: Moisture resistant MDF





Dimension: 2.36" w x 0.75" h

GSNO5

LAMINATE STAIR NOSE

Finishes the end of a step.

Note: Always ensure that existing stair (Tread depth and Riser height) dimensions are maintained

Surface: Wear resistant laminate
Core Material: Moisture resistant MDF

1

Install the flooring leaving a 1-3/8" space from the end of the step for the stair nose installation.

2

Measure and trim to fit.

3

Apply a generous bead of construction adhesive along the underside of the stair nose.

4

Leaving 1/8" space for expansion, carefully place the stair nose against the front of the step, making sure the transition is in place. Press down firmly over the entire stair nose.
For added security, secure with finishing nails.